

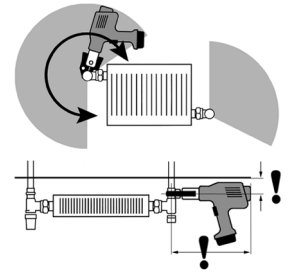
Instruction

Installing RA-N radiator valves and RLV lockshield valves with press-fit connection

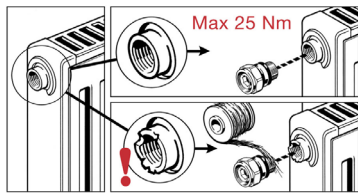
1. Ensure that the tools needed are available.



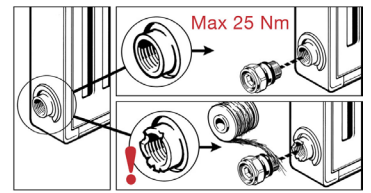
2. Ensure that the workspace is sufficient, according to press tools suppliers specifications.



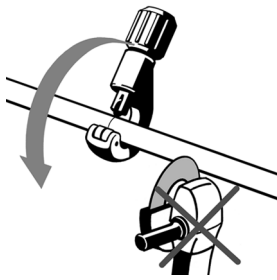
3. Install the nipple.
The RA-N radiator valve must be installed in the flow line. Make sure that the surface for the O-ring is intact, or use Teflon or similar sealing material.



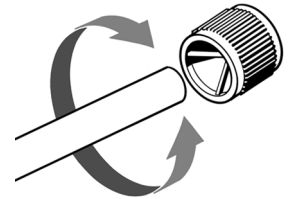
4. Install the nipple.
The RLV lockshield valve must be installed in the return line. Make sure that the surface for the O-ring is intact, or use Teflon or similar sealing material.



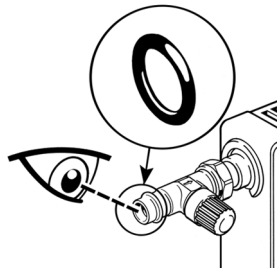
5. Cut the pipes using a pipe cutter.
Cutting tools that leaves burrs on the pipe end are not recommended.



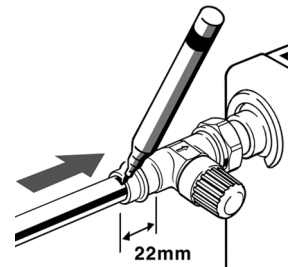
6. Debur the pipe ends.



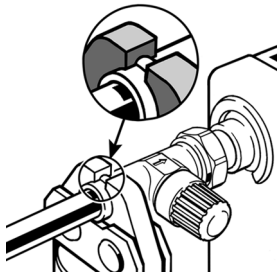
7. Visually inspect that the O-ring is placed correctly in the inside groove of the press-fit part of the valve.



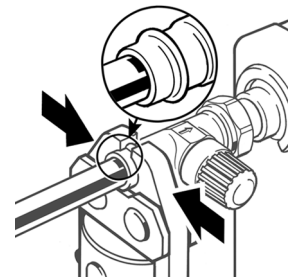
8. Insert the pipe 22 mm into the valve and mark it.



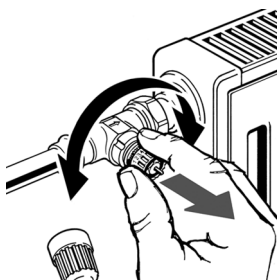
9. Place the press jaw centered on the press-fit part of the valve.



10. Visually inspect the marking to ensure that the pipe is not squeezed out of the valve during the pressing.



11. Adjust the presetting of the valve.



12. Install the sensor.

